
**ACI Racing Weekend Imola, 3-4 Settembre 2022**
**Smart EQ Fortwo e-Cup - Classifica Prove Libere 1**

Imola Circuit 4.909 m

1 / 2

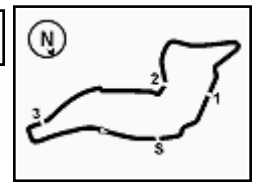
Num.	Conducente	Naz	Concorrente	Team	Auto	Tempo	Dist.	Rel.	Giri
1	<b>69 SAVOIA</b> Francesco	ITA	Arduini Corse	CityCar Bari	smart EQ fortwo e-cup	<b>2'35.591</b>			3
2	<b>44 TORELLI</b> Gabriele	ITA	Arduini Corse	Autotorino	smart EQ fortwo e-cup	<b>2'36.760</b>	1.169	1.169	5
3	<b>102 BENCIVENNI</b> Filippo	ITA	Arduini Corse	Barbuscia	smart EQ fortwo e-cup	<b>2'38.154</b>	2.563	1.394	4
4	<b>53 DI LUCA</b> Simone	ITA	Arduini Corse	MB Roma	smart EQ fortwo e-cup	<b>2'38.400</b>	2.809	0.246	5
5	<b>222 SICURO</b> Igor	ITA	Arduini Corse	Autotorino	smart EQ fortwo e-cup	<b>2'38.440</b>	2.849	0.040	5
6	<b>26 CICCAGLIONI</b> Matteo	ITA	Arduini Corse	L'Auto	smart EQ fortwo e-cup	<b>2'38.732</b>	3.141	0.292	5
7	<b>7 LONGO</b> Lorenzo	ITA	Arduini Corse	Novelli 1934	smart EQ fortwo e-cup	<b>2'38.809</b>	3.218	0.077	5
8	<b>3 LONGO</b> Riccardo	ITA	Arduini Corse	Paradiso Group	smart EQ fortwo e-cup	<b>2'38.888</b>	3.297	0.079	5
9	<b>71 PIGIONANTI</b> Christian	ITA	Arduini Corse	Scotti	smart EQ fortwo e-cup	<b>2'39.724</b>	4.133	0.836	5
10	<b>22 SANTI</b> Denny	ITA	Arduini Corse	Sirio	smart EQ fortwo e-cup	<b>2'39.760</b>	4.169	0.036	4
11	<b>21 CAPRA</b> Piergiorgio	ITA	Arduini Corse	Venus	smart EQ fortwo e-cup	<b>2'39.982</b>	4.391	0.222	5
12	<b>27 MOSCONI</b> Marco	ITA	Arduini Corse	Bonera	smart EQ fortwo e-cup	<b>2'40.094</b>	4.503	0.112	4
13	<b>85 DE PASQUALE</b> Giuseppe	ITA	Arduini Corse	Rstar	smart EQ fortwo e-cup	<b>2'40.171</b>	4.580	0.077	3
14	<b>50 MILANI</b> Vittorio	ITA	Arduini Corse	Lodauto	smart EQ fortwo e-cup	<b>2'40.684</b>	5.093	0.513	5
15	<b>12 LOMBARDO</b> Francesco	ITA	Arduini Corse	Delta Motors	smart EQ fortwo e-cup	<b>2'40.929</b>	5.338	0.245	5
16	<b>16 CALVAGNI</b> Tomas Denis	ITA	Arduini Corse	Comer Sud	smart EQ fortwo e-cup	<b>2'41.073</b>	5.482	0.144	5
17	<b>100 CARLOTTO</b> Mattia	ITA	Arduini Corse	Trivellato	smart EQ fortwo e-cup	<b>2'41.669</b>	6.078	0.596	4
18	<b>23 CAMPAGNA</b> Andrea	ITA	Arduini Corse	F3 Motors	smart EQ fortwo e-cup	<b>2'42.494</b>	6.903	0.825	5
19	<b>90 MAURIELLO</b> Gianluca	ITA	Arduini Corse	TP Auto	smart EQ fortwo e-cup	<b>2'42.776</b>	7.185	0.282	5
20	<b>96 MARECH</b> Giuseppe	ITA	Arduini Corse	Safra Motors	smart EQ fortwo e-cup	<b>2'43.624</b>	8.033	0.848	4
21	<b>4 RICCARDI</b> Matteo	ITA	Arduini Corse	Merbag	smart EQ fortwo e-cup	<b>2'45.261</b>	9.670	1.637	5
22	<b>13 ARDUINI</b> Leonardo	ITA	Arduini Corse	Crema Diesel	smart EQ fortwo e-cup				0

Umidità	55%	ARIA	25°C
Condizioni	DRY	Pista	31°C

Direttore di Gara : Massimiliano Ghinassi

	Inizio	Fine
02/09/2022	19:05	19:23

Esposta alle: .....


**ACI Racing Weekend Imola, 3-4 Settembre 2022**
**Smart EQ Fortwo e-Cup - Classifica Prove Libere 1**
**Penalty and Infringement**

19.10	<b>50</b>	<b>V. MILANI</b>	Time Deleted (2'41.994) - Exceeded Track Limits - Turn 13
19.10	<b>69</b>	<b>F. SAVOIA</b>	Time Deleted (2'36.570) - Exceeded Track Limits - Turn 13
19.10	<b>44</b>	<b>G. TORELLI</b>	Time Deleted (2'37.911) - Exceeded Track Limits - Turn 15
19.11	<b>12</b>	<b>F. LOMBARDO</b>	Time Deleted (2'44.143) - Exceeded Track Limits - Turn 15
19.12	<b>26</b>	<b>M. CICCAGLIONI</b>	Time Deleted (2'38.915) - Exceeded Track Limits - Turn 9
19.13	<b>23</b>	<b>A. CAMPAGNA</b>	Time Deleted (2'42.741) - Exceeded Track Limits - Turn 13
19.16	<b>22</b>	<b>D. SANTI</b>	Time Deleted (2'40.298) - Exceeded Track Limits - Turn 13
19.16	<b>16</b>	<b>T. CALVAGNI</b>	Time Deleted (2'41.105) - Exceeded Track Limits - Turn 13
19.16	<b>12</b>	<b>F. LOMBARDO</b>	Time Deleted (2'39.253) - Exceeded Track Limits - Turn 13
19.16	<b>4</b>	<b>M. RICCARDI</b>	Time Deleted (2'41.194) - Exceeded Track Limits - Turn 15
19.18	<b>50</b>	<b>V. MILANI</b>	Time Deleted (2'43.726) - Exceeded Track Limits - Turn 15
19.18	<b>3</b>	<b>R. LONGO</b>	Time Deleted (2'39.390) - Exceeded Track Limits - Turn 13
19.19	<b>85</b>	<b>G. DE PASQUALE</b>	Current Lap Deleted - Exceeded Track Limits - Turn 15
19.19	<b>12</b>	<b>F. LOMBARDO</b>	Time Deleted (2'38.934) - Exceeded Track Limits - Turn 15

**Fastest Laps Sequence**

Num.	Concorrente	Naz	Team	Auto	Local Time	Tempo	Dist.	Media
<b>102</b>	<b>F. BENCIVENNI</b>	ITA	Barbuscia	smart EQ fortwo e-cup	19:10'35.063	<b>2'42.231</b>		108,934
<b>222</b>	<b>I. SICURO</b>	ITA	Autotorino	smart EQ fortwo e-cup	19:10'40.784	<b>2'41.890</b>	-0.341	109,163
<b>7</b>	<b>L. LONGO</b>	ITA	Novelli 1934	smart EQ fortwo e-cup	19:10'51.549	<b>2'41.394</b>	-0.496	109,498
<b>53</b>	<b>S. DI LUCA</b>	ITA	MB Roma	smart EQ fortwo e-cup	19:11'23.759	<b>2'40.397</b>	-0.997	110,179
<b>69</b>	<b>F. SAVOIA</b>	ITA	CityCar Bari	smart EQ fortwo e-cup	19:13'04.392	<b>2'36.848</b>	-3.549	112,672
<b>69</b>	<b>F. SAVOIA</b>	ITA	CityCar Bari	smart EQ fortwo e-cup	19:15'39.983	<b>2'35.591</b>	-1.257	113,582